

COTTON USA Economic Update



COTTON USA Global Economic Update - May 2014

U.S. COTTON SUPPLY & OFFTAKE

(000) 480-Pound Bales

	2013-14e	2014-15p
Beginning Stocks	3,900	2,800
Production	12,910	14,500
Imports	10	10
Total Supply	16,820	17,310
Mill Use	3,600	3,700
Exports	10,400	9,700
Total Offtake	14,000	13,400
Ending Stocks	2,800	3,900
Stocks-to-Use Ratio	20.0%	29.1%

Source: USDA-WAOB May WASDE Report.

e=USDA estimate, p= USDA projection.

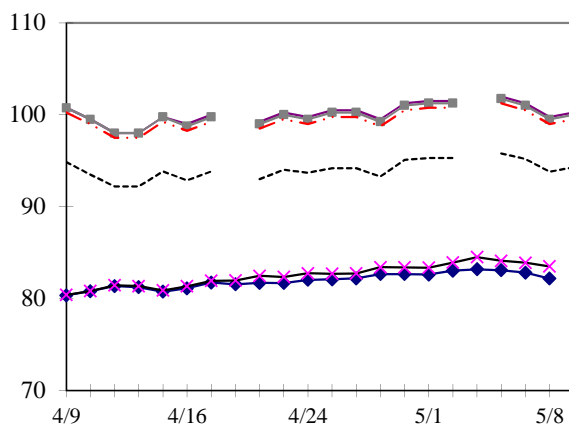
HIGHLIGHTS

- '14-15 World production estimated at 115.5 million bales, 1.7 million bales lower than the previous crop year.
- '14-15 World mill use estimated at 111.8 million bales, 2.5 million bales higher than the previous crop year.
- '14-15 World ending stocks estimated at 101.7 million bales, 3.8 million bales higher than the previous crop year..
- '14-15 U.S. production estimated at 14.5 million bales, 1.6 million bales higher than the previous crop year.
- '14-15 U.S. mill use estimated at 3.7 million bales, 100,000 bales higher than the previous crop year.
- '13-14 U.S. exports estimated at 9.7 million bales, 700,000 bales lower than the previous crop year.
- '13-14 U.S. ending stocks estimated at 3.9 million bales, 1.1 million bales higher than previous crop year.

DAILY PRICES

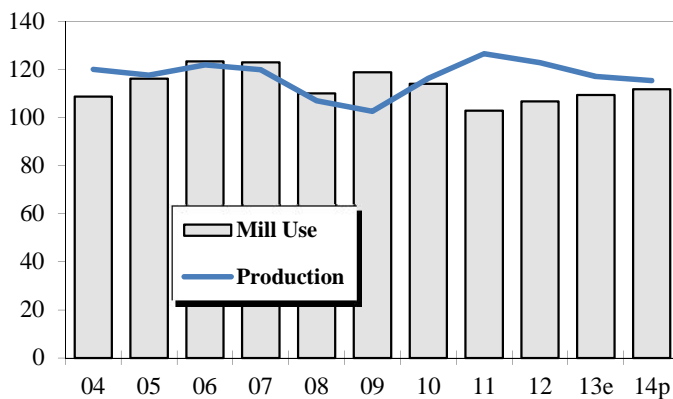
Cents/Pound

◆ NY Nearby ✕ NY Dec 14
 - - - "A (FE)" Index — Ca/Az (FE)
 — Memphis (FE) - · - · MOT (FE)



WORLD COTTON PRODUCTION AND USE

Million Bales



2014-15 WORLD COTTON SUPPLY & OFFTAKE

Million 480-Pound Bales

	Beginning		Imports	Supply	Mill Use	Exports	Ending	Stocks-to- Use Ratio
	Stocks	Production						
World	97.9	115.5	36.3	213.4	111.8	36.3	101.7	90.9%
U.S.	2.8	14.5	0.0	17.3	3.7	9.7	3.9	29.1%
China	59.6	29.5	8.5	97.6	37.0	0.1	60.5	163.3%
Pakistan	2.9	9.5	3.0	15.4	11.8	0.4	3.2	26.3%
India	10.4	28.5	1.0	39.9	23.5	5.7	10.7	36.7%
Central Asia	2.6	6.6	0.0	9.2	2.4	4.4	2.4	35.2%
Australia	2.1	3.1	0.0	5.2	0.0	3.2	2.1	65.4%
Brazil	7.0	8.3	0.1	15.4	4.2	3.5	7.8	101.7%
Indonesia	0.5	0.0	2.8	3.3	2.7	0.0	0.5	19.9%
Mexico	0.6	1.1	1.0	2.6	1.8	0.2	0.6	30.0%
Turkey	1.4	2.9	3.8	8.1	6.4	0.2	1.5	22.6%

Source: USDA-WAOB May WASDE Report.

U.S. AND WORLD FIBER PRICES

Cents/Pound

MONTH	Mill							
	December Futures		US Spot	Delivered	Far East	"A (FE)"	AWP	China
	Near	Far	1-1/16	Memphis	Low U.S.	Index		Polyester
Dec-13	77.01	77.40	78.75	NA	91.16	87.49	66.24	72.04
Jan-14	78.28	78.30	81.43	NA	94.15	90.96	69.10	71.23
Feb-14	77.68	77.72	83.21	NA	96.71	94.05	71.86	70.00
Mar-14	79.67	78.65	86.70	NA	100.56	96.95	74.29	66.56
Apr-14	81.39	80.28	85.48	NA	99.55	94.20	71.37	65.93

CF FAR EAST QUOTATIONS
FOR AMERICAN GROWTHS

Weekly Average in Cents/Pound

Type A (FE)

Memphis

	Cal/Az (FE)	(FE)	MOT (FE)
	1 3/32"	1 3/32"	1 3/32"
03-Apr-14	101.90	101.90	101.65
10-Apr-14	100.40	100.40	99.90
17-Apr-14	98.95	98.85	98.35
24-Apr-14	99.75	99.50	99.00
01-May-14	100.65	100.40	99.90
08-May-14	101.13	100.88	100.38

Source: Cotlook, Ltd. NA = Not Available

www.cottonusa.org

